

MONTHLY MEMBERSHIP PROGRESS REPORT

District 322 B2

Results as of: 5/31/2026

GMT:

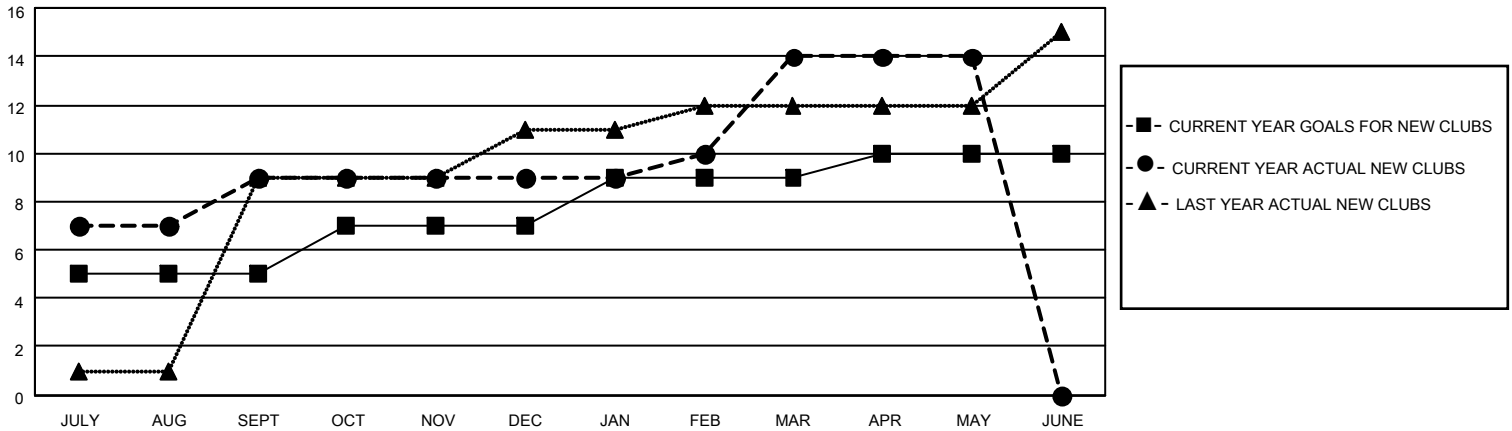
LOCATION INDIA

GMT CA

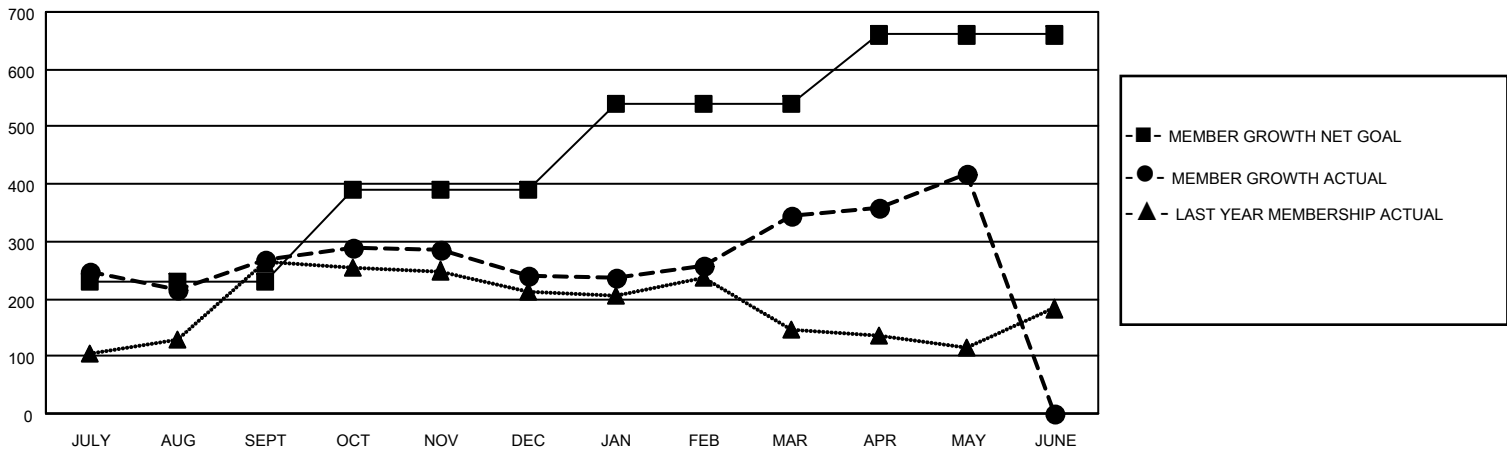
| Clubs | | | |
|-----------------------|---------------|-----------|---------------|
| RESULTS FOR 2025-2026 | | | |
| QUARTER | NEW CLUB GOAL | NEW CLUBS | DROPPED CLUBS |
| JULY/AUG/SEPT | 5 | 9 | 2 |
| OCT/NOV/DEC | 2 | 0 | 6 |
| JAN/FEB/MAR | 2 | 5 | 1 |
| APR/MAY/JUNE | 1 | 0 | 0 |

| Members | | | |
|-----------------------|------------------------|----------------------|--|
| RESULTS FOR 2025-2026 | | | |
| QUARTER | MEMBER GROWTH NET GOAL | MEMBER GROWTH ACTUAL | DROPPED MEMBERS ACTUAL (including transfers) |
| JULY/AUG/SEPT | 230 | 388 | 81 |
| OCT/NOV/DEC | 160 | 201 | 217 |
| JAN/FEB/MAR | 150 | 157 | 43 |
| APR/MAY/JUNE | 120 | 100 | 26 |

GOALS AND ACTUAL NEW CLUBS CUMULATIVE



GOALS AND ACTUAL MEMBERS CUMULATIVE



| | | | |
|------------------------|---|---------------------------------|----------------|
| DROPPED CLUBS: 9 | 69 CLUBS OF 106 ADDED 1 OR MORE NEW MEMBERS | <u>GENDER DISTRIBUTION</u> | |
| <u>DROPPED MEMBERS</u> | | MALE | 2,407 (68.05%) |
| DECEASED | 13 | FEMALE | 1,130 (31.95%) |
| CLUB CANCELLED | 155 | TOTAL FAMILY UNIT MEMBERS | |
| OTHER | 196 | 1,304 | |
| TOTAL | 364 | FAMILY MEMBERS PAYING HALF DUES | |
| | | 808 | |

[CLICK HERE FOR CUMULATIVE MEMBERSHIP DATA](#)